

A46 Newark Bypass

**Scheme number:
TR010065**

7.71 Agricultural Land Plan

APFP Regulation 5(2)(a)

Planning Act 2008

Infrastructure Planning (Examination Procedure) Rules 2010

Volume 7

March 2025

Infrastructure Planning

Planning Act 2008

**Infrastructure Planning
(Examination Procedure) Rules
2010**

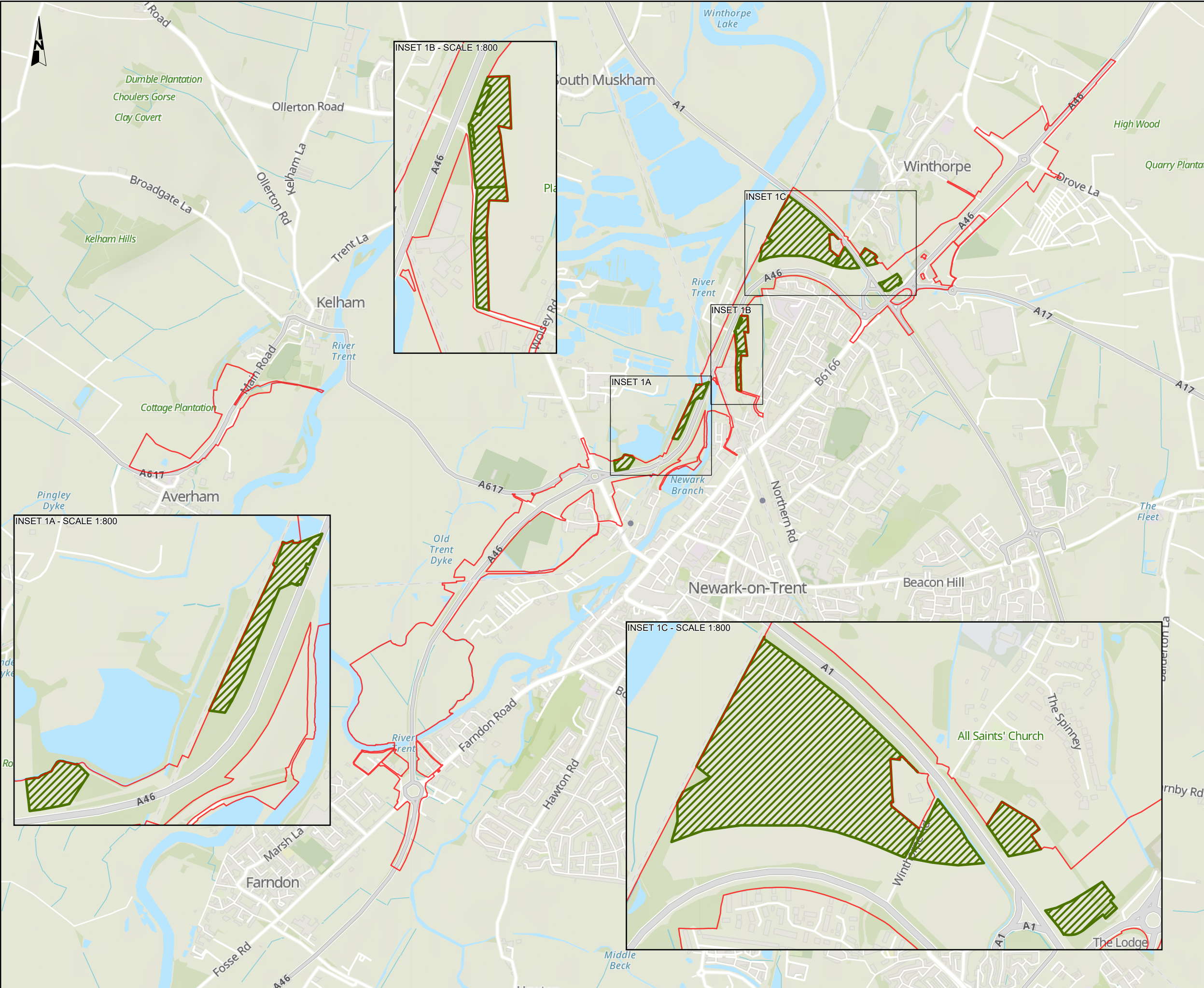
A46 Newark Bypass

Development Consent Order 202[x]

7.71 AGRICULTURAL LAND PLAN

Regulation Number:	Regulation 5(2)(q)
Planning Inspectorate Scheme Reference	TR010065
Application Document Reference	7.71
Author:	A46 Newark Bypass Project Team, National Highways

Version	Date	Status of Version
Rev 1	March 2025	Deadline 7 submission



NOTES

This drawing should be read in conjunction with Schedule 2 of the Development Consent Order.

All dimensions are in metres unless otherwise stated.

Do not scale from this drawing, use only printed dimensions.

Service Layer Credits

Contains OS data © Crown Copyright and database right 2025

Contains data from OS Zoomstack, Contains OS data © Crown Copyright and database right 2023

Contains data from OS Zoomstack

KEY TO SYMBOLS

Order Limits

Areas requiring agricultural land classification surveys

Warsop

Southwell

Newark-on-Trent

Southwell

Newark-on-Trent

C01	11/03/25	DCO EXAMINATION	MH	EM	AR
REV.	DATE	AMENDMENT DETAILS	ORIG	CHKD	APPD

CLIENT

national highways

PURPOSE OF ISSUE

DCO EXAMINATION

DEVELOPMENT CONSENT ORDER NUMBER

TR010065

PROJECT TITLE

A46 NEWARK BYPASS

DRAWING TITLE

Agricultural Land Plan

Sheet 1 of 1

ORIGINAL SIZE

A3

SCALE

1:25,000

DRAWING NUMBER <div>HE551478</div>	ORIGINATOR <div>SKAG</div>	VOLUME <div>EGT</div>	PROJECT REF NO. <div>HE551478</div>
LOCATION <div>CONWI_CONW</div>	TYPE <div>DR</div>	ROLE <div>LE</div>	REVISION <div>C01</div>
	NUMBER <div>00025</div>		

0

500

1,000

Metres

© Skanska

This document is issued for the party which commissioned it and for specific purposes connected with the captioned project only. It should not be relied upon by any other party or used for any other purpose.

We accept no responsibility for the consequences of this document being relied upon by any other party, or being used for any other purpose, or containing any error or omission which is due to an error or omission in data supplied to us by other parties.